

Project Title:

Proposed Development on
Erf 2006, Parsonsvei

Drawing Title:

Locality Map

LEGEND

Site Boundary

Road Network

River Line

Settlement Types

National Roads

Provincial Paved Roads

Provincial Unpaved Roads

Municipal and Private Roads

NON-PERENNIAL CENTER LINE

PERENNIAL CENTER LINE

Cadastral

Allotment

Towns

Wards

Local Municipalities

Reference:

2257 - Fig 1 - Locality Map

Date:

April 2024

Projection:

Hartebeesthoek 1994
WGS 84

Prepared by : KW

Checked by : LJ

Limits of Liability and Disclaimer of Warranty EAS makes no warranty of any kind, expressed or implied, with regard to the data and shall not be held liable in any event for any incidental or consequential damages in connection with or arising out of the use of this data. The data remains the sole property of the CLIENT and may only be used for the purposes of a project with the prior written approval of the CLIENT.

Scale : Use Scalebar

Engineering Advice
and Services



Project Title:

Proposed Development on
Erf 2006, Parsonsvei

Drawing Title:

Rivers and Wetlands

LEGEND

Site Boundary

100 m Buffer

500 m Buffer

River Types

Perennial Rivers

Non-Perennial Rivers

Channelled valley-bottom wetland

Seep wetland

Unchannelled valley-bottom wetland

Wetland flat

NMBM Ecological Process Status

Riverine Corridor

Cadastral

Reference:

2257 - Fig 3 - Rivers and Wetlands

Date:

April 2024

Projection:

Hartebeesthoek 1994
WGS 84

Prepared by : KW

Checked by : LJ

Limits of Liability and Disclaimer of Warranty EAS makes no warranty of any kind, expressed or implied, with regard to the data and shall not be held liable in any event for any incidental or consequential damages in connection with or arising out of the use of this data. The data remains the sole property of the CLIENT and may only be used for the purposes of a project with the prior written approval of the CLIENT.

Project Title:

Proposed Development on
Erf 2006, Parsonsvei

Drawing Title:

**Vegetation Map
(VEGMAP 2018)**

LEGEND

- Site Boundary
- Road Network**
- National Roads
- Provincial Paved Roads
- Provincial Unpaved Roads
- Municipal and Private Roads
- NBA Conservation Status 2018**
- Least Concern
- Near Threatened
- Vulnerable
- Endangered
- Critically Endangered
- Not Assessed

Reference:

2257 - Fig 4 - Vegetation Map

Date:

April 2024

Projection:

Hartebeesthoek 1994
WGS 84

Prepared by : KW

Checked by : LJ

Limits of Liability and Disclaimer of Warranty EAS makes no warranty of any kind, expressed or implied, with regard to the data and shall not be held liable in any event for any incidental or consequential damages in connection with or arising out of the use of this data. The data remains the sole property of the CLIENT and may only be used for the purposes of a project with the prior written approval of the CLIENT.



Engineering Advice
and Services

Scale : Use Scalebar



Project Title:

Proposed Development on
Erf 2006, Parsonsvei

Drawing Title:

NMBM BP Vegetation
Map

LEGEND

- Site Boundary
- Road Network
- National Roads
- Provincial Paved Roads
- Municipal and Private Roads
- River Line
- NON-PERENNIAL CENTER LINE
- PERENNIAL CENTER LINE
- NMBBP Conservation Status (2015)
- CRITICALLY ENDANGERED
- ENDANGERED
- VULNERABLE
- NMBM BP Veg Type (2015)
- Baakens Forest Thicket
- Betheldsdorp Bontveld
- Malabar Grassy Fynbos
- Rowallan Park Grassy fynbos

Reference:

2257 - Fig 5 - NMBM BP Vegetation Map

Date:

April 2024

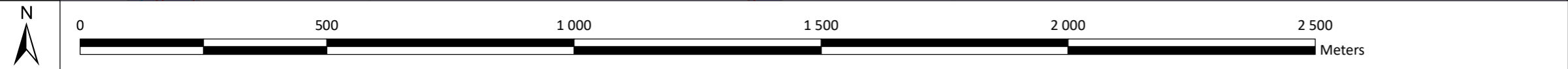
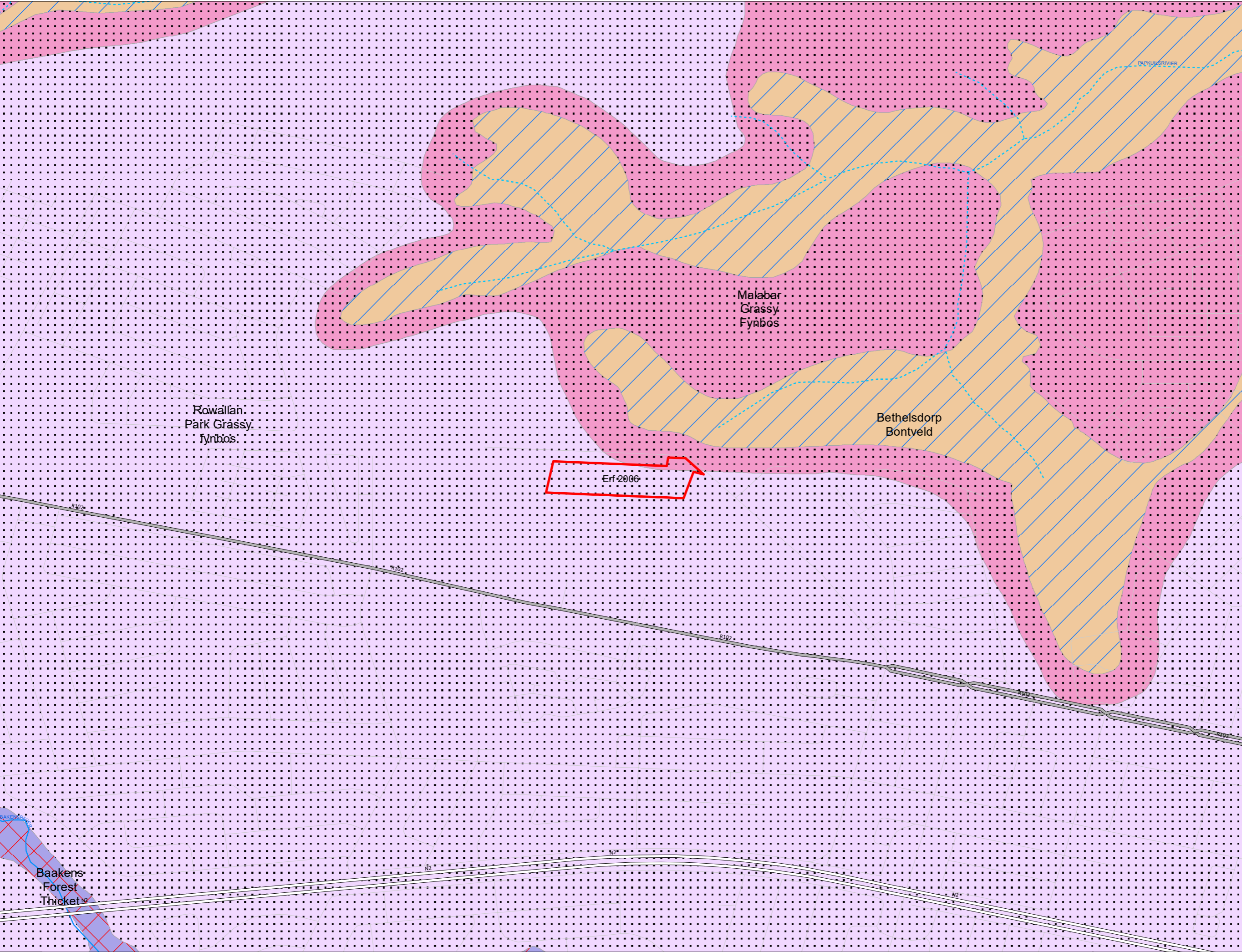
Projection:

Hartebeesthoek 1994
WGS 84

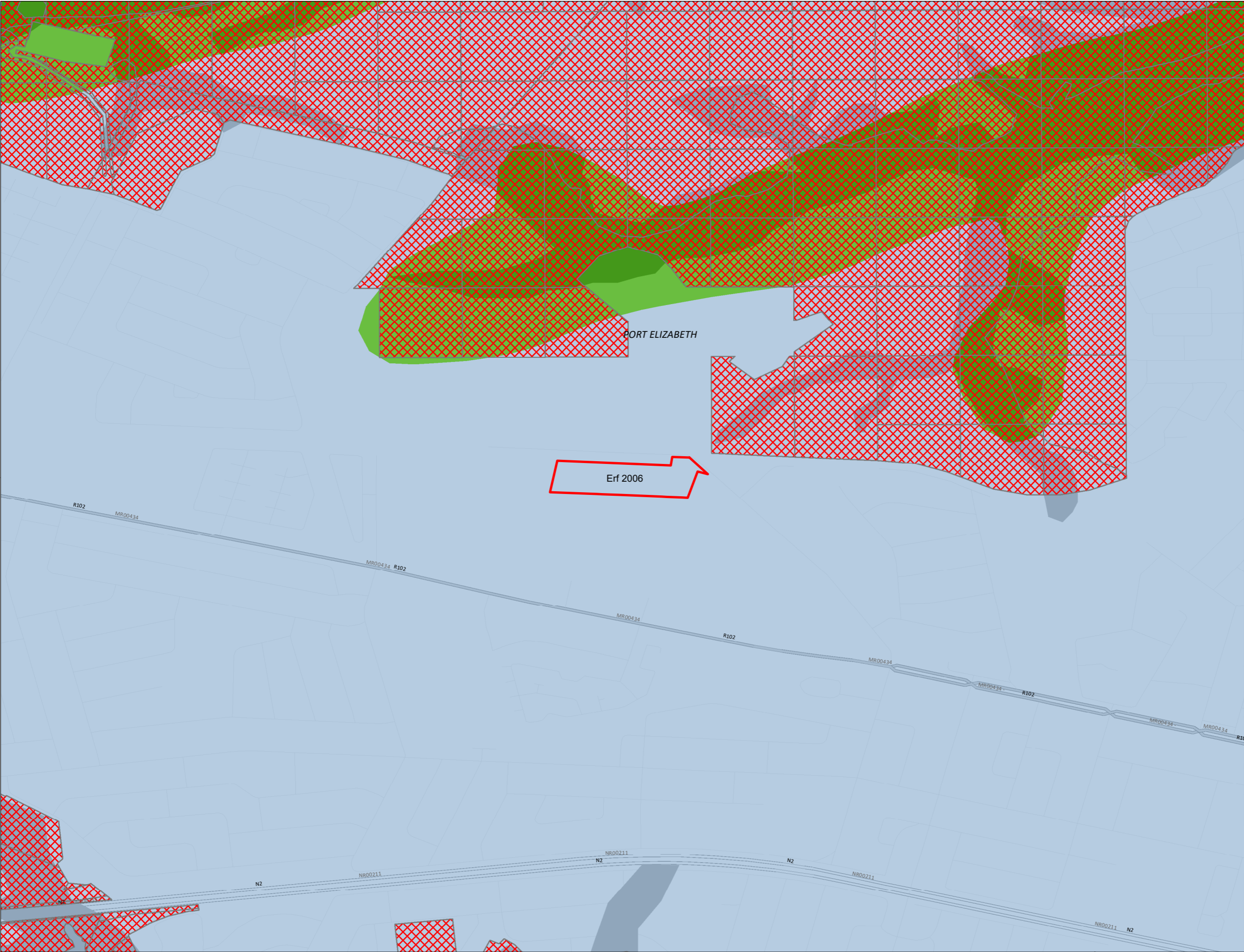
Prepared by : KW

Checked by : LJ

Limits of Liability and Disclaimer of Warranty EAS makes no warranty of any kind, expressed or implied, with regard to the data and shall not be held liable in any event for any incidental or consequential damages in connection with or arising out of the use of this data. The data remains the sole property of the CLIENT and may only be used for the purposes of a project with the prior written approval of the CLIENT.



Scale : Use Scalebar



Project Title:

Proposed Development on Erf 2006, Parsonsvelei

Drawing Title:

CBA Map

LEGEND

Site Boundary

NMBM Bioregional Plan Status

CBA

ECBCP CBA Status

CBA 2

CBA 3

NMBM Ecological Process Status

Riverine Corridor

River Types

Perennial Rivers

Non-Perennial Rivers

Reference:

2257 - Fig 6 - CBA Map

Date:

April 2024

Projection:

Hartebeesthoek 1994
WGS 84

Prepared by : KW

Checked by : LJ

Limits of Liability and Disclaimer of Warranty EAS makes no warranty of any kind, expressed or implied, with regard to the data and shall not be held liable in any event for any incidental or consequential damages in connection with or arising out of the use of this data. The data remains the sole property of the CLIENT and may only be used for the purposes of a project with the prior written approval of the CLIENT.

N

0

500

1 000

1 500

2 000

2 500

Meters

Scale : Use Scalebar

Engineering Advice
and Services

Project Title:

Proposed Development on
Erf 2006, Parsonsvei

Drawing Title:

CBA Status (Aquatic) &
NFEPA

LEGEND

Site Boundary

Road Network

National Roads

Provincial Paved Roads

Municipal and Private Roads

NFEPA Rivers

C

Z

National Wetland Class

Estuarine

Estuarine

Fish Sanctuary

Sub-Quaternary Catchment

FishFSA

ECBCP CBA - Aquatic (2009)

CBA 2

Reference:

2257 - Fig 6.1 - CBA Status (Aquatic) & NFEPA

Date:

April 2024

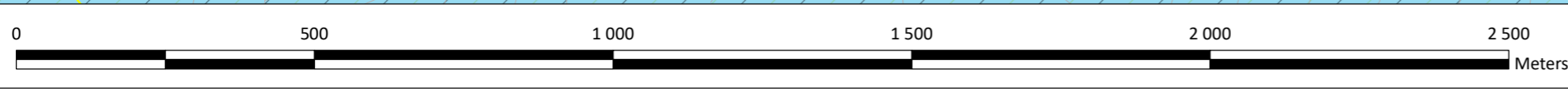
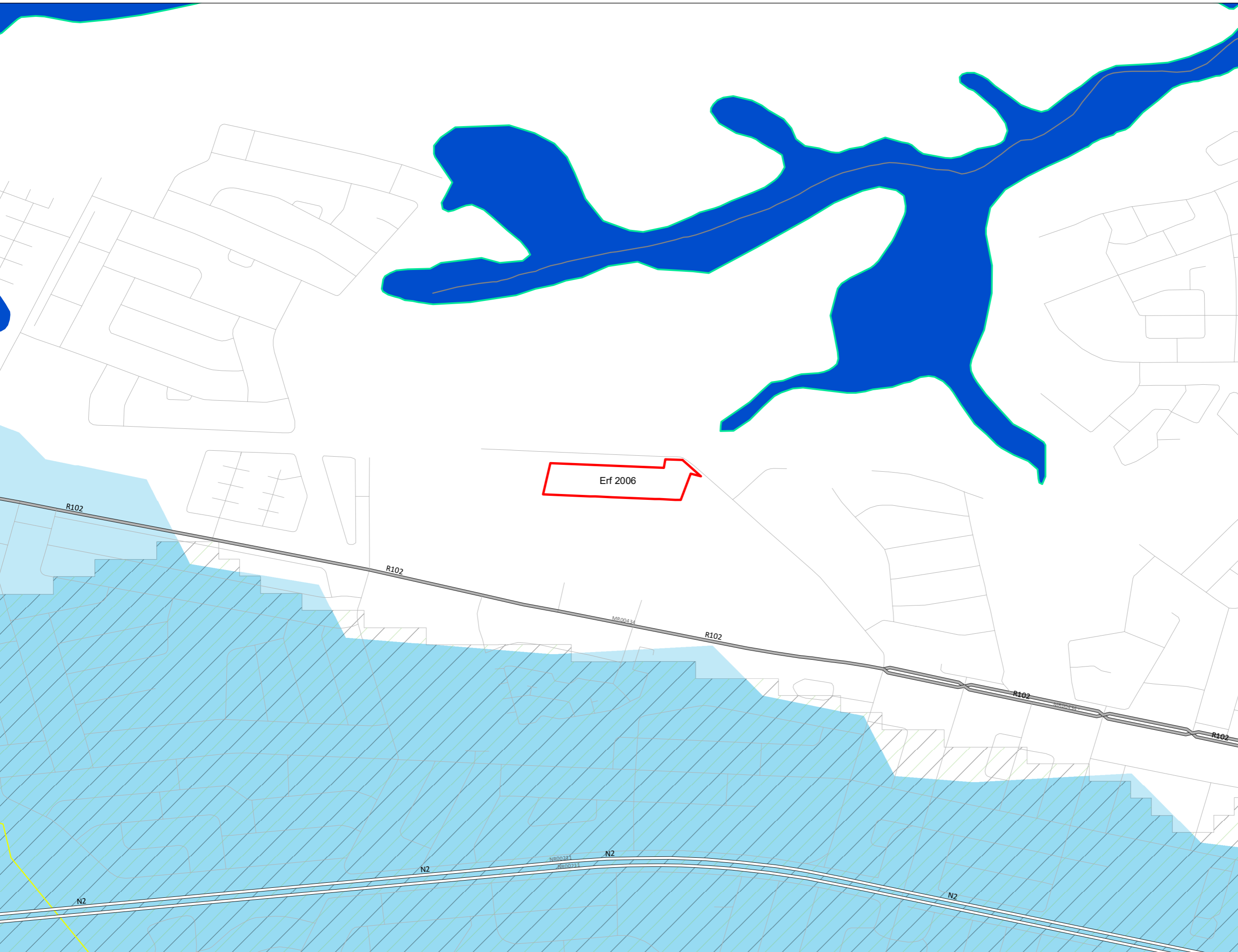
Projection:

Hartebeesthoek 1994
WGS 84

Prepared by : KW

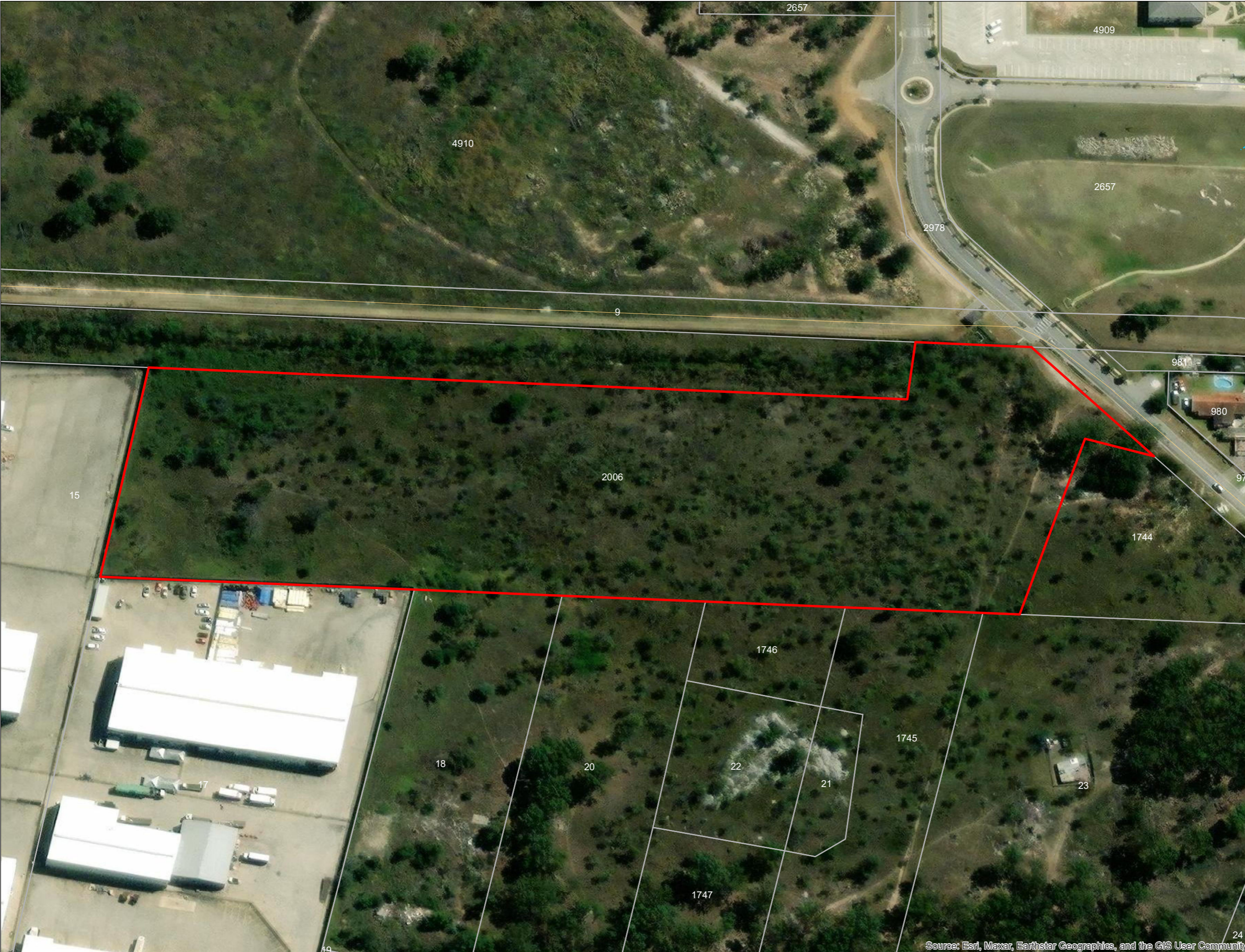
Checked by : LJ

Limits of Liability and Disclaimer of Warranty EAS makes no warranty of any kind, expressed or implied, with regard to the data and shall not be held liable in any event for any incidental or consequential damages in connection with or arising out of the use of this data. The data remains the sole property of the CLIENT and may only be used for the purposes of a project with the prior written approval of the CLIENT.



Scale : Use Scalebar

 Engineering Advice
and Services



Project Title:

Proposed Development on Erf 2006, Parsonsvelei

Drawing Title:

Aerial Map

LEGEND

Site Boundary

Road Network

Municipal and Private Roads

River Line

NON-PERENNIAL CENTER LINE

Cadastral

Reference:

2257 - Fig 8 - Aerial Map

Date:

April 2024

Projection:

Hartebeesthoek 1994
WGS 84

Prepared by : KW

Checked by : LJ

Limits of Liability and Disclaimer of Warranty EAS makes no warranty of any kind, expressed or implied, with regard to the data and shall not be held liable in any event for any incidental or consequential damages in connection with or arising out of the use of this data. The data remains the sole property of the CLIENT and may only be used for the purposes of a project with the prior written approval of the CLIENT.